



Parish Newsletter

Chinley, Buxworth & Brownside

Autumn 2024

Construction Progressing Well!

The new Community Centre currently under construction in Chinley has now reached the half-way point. It didn't take long to demolish the old building back in June and swift progress has been made since, with the external shell of the new building now watertight. The contractors are already working on the interior of the building, which includes a main hall, meeting room, kitchen, library, changing rooms, storage and toilet facilities, as well as a new car park and landscaping.

The current estimated handover date from the contractor is early February

and we are working towards a grand opening later that month. We can't wait to welcome everyone through the doors soon. Watch this space!

Access Restrictions

To enable the car park and landscaping works to be carried out, the footpath to the playground at the rear of Lower Lane will be closed towards the end of October. Access to the playing field and playground will be via Rhuddlan Place. Unfortunately, there will be no alternative route via Lower Lane until the construction is almost complete. Thank you in advance for your patience and understanding.



Post demolition



Front Elevation in progress



Rear Elevation in progress



Chinley, Buxworth & Brownside Parish Council

Parish Clerk: Mrs Georgina Cooper

Parish Room, 3 Lower Lane, Chinley, High Peak, Derbyshire, SK23 6BE

clerk@chinleybuxworthbrownside-pc.gov.uk

Tel: 01663 750139

www.chinleybuxworthbrownside-pc.gov.uk

Monthly Meetings

Meetings of the Parish Council are currently held on the **4th Wednesday** of each month, except in August and December, at 7:30pm in the Parish Room, 3 Lower Lane, Chinley.

The agenda for each meeting may be found on the website and on parish noticeboards in the week before the meeting. Members of the public are welcome to attend meetings and may raise matters with the Council during 'Open Forum'.

Co-option

We currently have one vacancy for a parish councillor and applications are being invited for co-option. The Parish Council are particularly interested in hearing from people who live in Buxworth and/or can represent the interests of residents living there or have a keen interest in the management of our local open spaces and recreational facilities.

If you do not meet these criteria, but

are passionate about becoming a councillor and making a difference to our community, we still want to hear from you. Please contact the Parish Clerk for more information.

Christmas Lights Switch On



The two annual Christmas Lights Switch On events in our parish, both accompanied by Whaley Bridge Brass Band, will take place as follows:

Monday 25 November at 7pm - Squirrel Green, Chinley

After the Christmas Tree lighting, everyone is then invited into St Mary's Church for more carols with Whaley Bridge Brass Band and Chinley Primary School choir.

Friday 29 November at 6pm - Buxworth Primary School

After the Christmas Tree lighting, everyone is then invited into the school.

Please see posters for more details nearer the time.

Parish Councillors

Cllr Martin Walton (Chairman)

Cllr Patrick Wilson (Vice Chairman)

Cllr Caroline Rofer

Cllr John Mulryan

Cllr Chris Denton

Cllr Richard Drabble

Cllr Alastair Knox

Cllr Mike Travis

Cllr Penny Took

Community Centre Fundraising



The Parish Council would like to take this opportunity to thank Tarmac for supporting the project with a contribution of £71,552 from their Landfill Communities Fund. The fund enables landfill operators to donate part of their annual tax liability to enrolled Environmental Bodies for a variety of approved community and environmental projects. Tarmac was an early supporter of our project and the Parish Council are very grateful for their support and that this funding can now be confirmed.

The Parish Council are also thankful to High Peak Borough Council for supporting our project with a £40,000 contribution from the UK Shared Prosperity Fund. Our project has only been possible because of the support of a number of grant funding bodies as well as from local individuals and organisations in our community. We can't wait to acknowledge everyone's support when we open the new building to the community.

The Community Association continue to fundraise to further enhance the facilities available, and recently wrote out to some local businesses as they seek additional funding for items including a new projector and screen, outdoor furniture, a refurbished outdoor court and a Changing Places facility. If you would like to be part of

this fantastic project, please contact fundraiser@chinleyca.org.uk.

Time Capsule

As a record for generations to come, a time capsule has been sealed in the new Community Centre containing information to give whoever discovers it in the future a flavour of what's going on in 2024: local photographs of the parish, a newsletter, information about recent community activities, minutes of meetings, class photographs of our 2024 primary school leavers as well as items from other local groups. A photograph and details of the project team has also been included. The capsule is behind the wall on the right hand side as you enter the lobby. When will it be discovered?



Time capsule and contents

To keep up to date on our progress please follow our Facebook page – search for Chinley, Buxworth & Brownside Community Association. For further information, please contact the Parish Clerk.

Friends of Chinley Park (FoCP)

As always the volunteers at Chinley Park Nature Reserve have been busy looking after this wonderful haven for wildlife and the local community.

Work on gravelling the paths has continued into the autumn and at our recent Work Party we continued to work on strengthening the path edges. Please keep to all paths as much as possible as this prevents erosion and damaging the wildflowers in the meadows.



Heave Ho - Off we go!
Reinforcing the path edges

Many thanks again to the Longden family for mowing and baling the meadows this year for the benefit of the community. This job is essential for the health of these rare traditional hay meadows.

Another annual task that is necessary to maintain the nature reserve in tip

top condition is clearing around the pond edges ready for a winter thinning of vegetation in the pond.

Two other activities in the nature reserve this year was a Teddy Bears' Picnic for young nature lovers and the planting of 250 native bluebell bulbs. We hope these bluebells will flourish. Then we can add to them and gradually establish a beautiful display in spring.



Getting stuck in planting
250 native bluebell bulbs

The nature reserve really is a lovely place to enjoy in all seasons.

Work parties are held on the **2nd Saturday** of every month. If you would like to join us, please meet us at 10 am at the Stubbins Lane gate – new and returning volunteers (aged 16 and over) are always welcome.

STOP PRESS!!! The new Friends of Chinley Park Nature Reserve 2025 Calendar will be on sale soon!

Himalayan Balsam Management

Buxworth resident, Mike Davies, working with other local people and groups, is looking to set up a volunteer group to combat Himalayan Balsam on Buxworth's Recreation Ground. Next year, they are looking to meet up twice, and after that annually, to cut and pull Himalayan Balsam, which is aggressively spreading across the Rec.

Although attractive in appearance, as the name indicates, the plant is not indigenous to the UK and harms our natural ecosystems in a number of ways. It outcompetes native plants and if left unchecked will form large stands which shade and eventually kill native plants. Studies have shown that this impacts on the number of beetles, spider and bug species with declines of between 60 and 75%. In winter, the plant dies back leaving bare soil underneath which causes increased soil erosion, especially on river banks.

The plant is shallow rooted and easy to pull out of the ground. When in large numbers, the plant can be mechanically cut below the first node which will usually kill it.

The removal of the plant is part of a wider plan to increase biodiversity across the parish, with Derbyshire Wildlife Trust shortly implementing a number of interventions at Buxworth Rec to deliver habitat improvements and active rewilding as part of their

Species Survival Fund project.

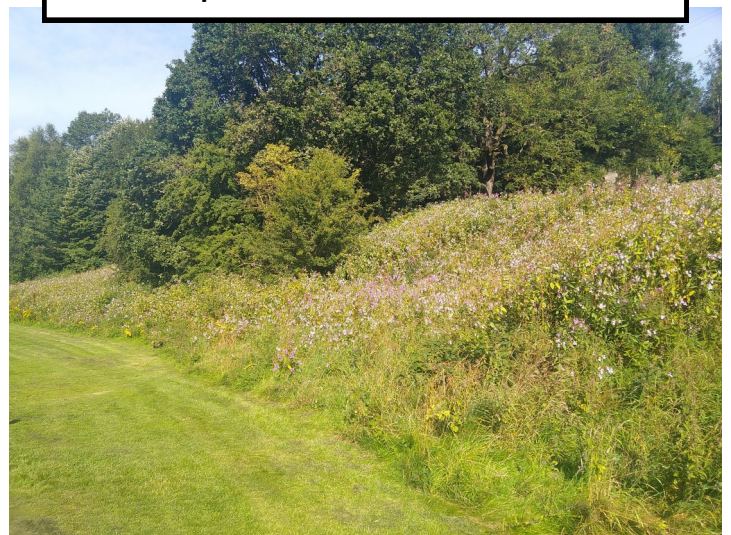
We really need as many residents as possible to commit to joining a volunteer group/working party to come and pick and cut the balsam here. Many hands really will make a big difference.

Initially we would meet twice, in May and June, and then annually thereafter. To register your interest in the first instance, please contact the Parish Clerk on

clerk@chinleybuxworthbrownside-pc.gov.uk and we will be in touch next Spring with more details.



Himalayan Balsam which is widespread across Buxworth



Chinley & Buxworth WI



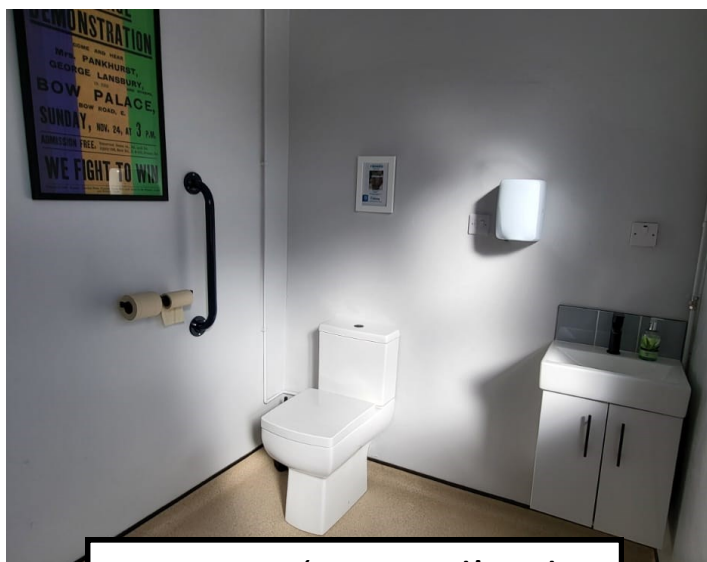
At our Annual Meeting in August, we all agreed that we have had a successful year. We have maintained our membership numbers, stayed in budget, and, above all else, enjoyed our activities and had fun!

At the meeting we agreed on our Committee members for this year. It is their job, led by our President, Judith Clegg, to ensure that we plan an interesting monthly programme, organise trips and events and oversee the maintenance of the WI Hall. We even managed a planning meeting outside this summer, the coffee and food at Green Lane Social is always very tempting!



Planning meeting at Green Lane Social

Our new toilets were finally opened in August and, thanks to support from the Chinley Coop, funds have been raised to 'Twin' one of them to a toilet in Nepal. This project enables you to fundraise to support a family abroad to build themselves a toilet. We take this facility for granted in this country but many families living in underdeveloped countries have no toilets to use. We will now raise funds again to 'Twin' our other new toilet.



Our new, 'twinned' toilet



Chinley & Buxworth WI continued

When we opened the new toilets we asked members to write a limerick for the occasion. This is our favourite!

*In the Hall where toilets were new,
The women's excitement just grew.*

*Now they were completed,
They'd be comfortably seated
And not have to wait in a queue!*

We have also been raising funds closer to home. We supported the Air Ambulance by raising £264 for their work in Derbyshire. Our next project is to raise funds for the charity Cystinosis Foundation. This one is very dear to our hearts as one of our members has a young granddaughter who is challenged every day by this rare condition.

We are currently creating our

monthly programme of activities for 2025 and are looking forward to some fascinating speakers. Gail Hill is our wonderful programme secretary and she is always on the lookout for new ideas. If you know or hear of anyone locally who provides talks, please let us know. All our contact details are on the notice board outside of the WI Hall.

As we move into the autumn and winter months, our monthly meetings will take place in the afternoon instead of the evening. These monthly meetings are always on the **1st Tuesday** of each month and are open to all women in the area. You can try us out for a couple of meetings for free before you have to pay a membership subscription. We hope to see you soon!

Shoebox Appeal

There will be a village collection of filled shoeboxes for the Link to Hope appeal. There are leaflets at the Post Office to learn how to fill your shoeboxes with new items either for a family or elderly person living in Eastern Europe in relative poverty. You may also donate via their website. You don't need to spend much money to make a difference!

Shoeboxes need to be either returned to the post office or email

liz-roberts@outlook.com to arrange a collection before 8th November.

Visit www.linktohope.co.uk/shoebox-appeal-2024 for more information.

Link to Hope believe that sending shoeboxes shows love from British people to those in war-torn or poverty-stricken circumstances, regardless of their background, colour, creed or religion.



A family receiving a Shoebox

Chinley Community Coop

Our community shop has now been open for more than two years. The shop is thriving, sales are up and our customer base is growing all the time.

Our large range of goods offer great value for money and many of our prices undercut the large supermarkets, especially our low waste range.

We continue to offer products that are either organic, ethically produced, with minimal packaging and better for the environment - often all four! There is also a range of locally produced goods and products, including honey, jams, pickles, eggs, cakes, cards, firewood and soaps.

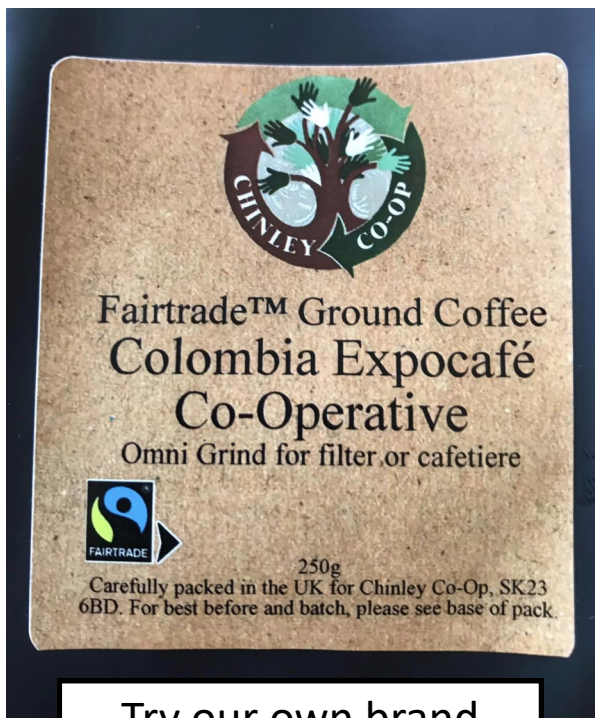
We also have our own brand ground coffee, which sells fast and will make an ideal Christmas present for coffee lovers.

The shop is run and staffed by volunteers from our community. At the moment we have 50 volunteers on our books. Ages range from 16 to well above 60. Staff work in pairs, typically doing three-hour shifts. Some work every week, others less frequently. We are always on the lookout for new volunteers and training is provided. If you are interested, please pop in and talk to us or contact Stephen Minter at steve@minter.me.uk.

We are open:

- **Monday 11am - 2pm** (increasing to 10am - 4pm from 2nd December)
- **Wednesday 10am - 4pm**
- **Thursday 4pm - 7pm**
- **Friday 10am - 4pm**
- **Saturday 10am - 4pm**

Please do come and visit us!



Try our own brand
ground coffee!



Chinley & Buxworth Transport Group (CBTG)

Rail and Station News

Many years' worth of campaigning appeared to have paid off when the government included Chinley Station in the published list of successful applicants for further consideration under the Access for All scheme, which would bring improvements to accessibility at Chinley station. We hope that the feasibility study already carried out by Network Rail on our behalf will strengthen our case. Watch this space!

Of more immediate importance, Northern Railway's decision to impose car parking charges at the station was contested with only limited success by us and the Parish Council. Northern Rail have agreed to postpone implementation until 2025 in acknowledgement of the lack of other available parking in the village during construction of the new Community Centre. Meanwhile, at less-blessed Hathersage, we understand the station car park now hosts 2-3 vehicles per day while approach roads are crammed. As everybody knows, parking in our village is already a vexed issue!

Anyone looking to travel by rail on weekends at the moment, especially on Sundays, should check their train times online before travelling as Northern are regularly cancelling trains at short notice due to ongoing staffing issues. Please ensure you have contingency plans in place.

Bus News

Responsibility for overseeing bus matters has transferred from the County Council to the new East Midlands Mayor's office. We are hopeful, of obtaining assurances concerning the survival, even the improvement, of our own 190 (currently only described as secure until 2025) and other local services.

Transport Survey

Thanks to all who contributed to our recent survey into transport preferences. We are now looking at the results and thinking how to proceed.

Website News

You can find more information and updates on these, and other matters, on our website which recently won the gold award for best website at the recent Railfuture national annual conference in Edinburgh. Congratulations to all involved!

www.chinleybuxworthtg.co.uk



Local Church News & Information

St Mary's, Chinley & St James', Buxworth

St Mary's, Chinley and St James' Buxworth PCC are delighted to announce the appointment of Mel Hartley as Priest-in-Charge of Chapel-en-le-Frith and of Chinley with Buxworth and Hayfield. Mel joins us from Eyam Parish church where she served as curate. She will be living in Chapel-en-le-Frith and will be ministering to our Parish. You can contact Mel at revd.mel.hartley@gmail.com.



New Priest-in-Charge
Rev Mel Hartley

Sunday Services are currently being held at 10am at St James', Buxworth on the **1st and 3rd Sundays** of the month and at 10am at St Mary's, Chinley on the **2nd and 4th Sundays**. Rev Mel Hartley will be leading the services on the 1st and 4th Sundays. For up to date information visit: www.chinleybuxworthcofe.jimdofree.com

Brierley Green Church

Weekly services are held every Sunday at 3pm followed by refreshments. All are welcome.

Coming up ...

Sunday 10 November - Remembrance Sunday

Sunday 15 December - Carol Service with Whaley Bridge Brass Band

Friday 20 December - carol singing around Buxworth (meet at 6:30pm)

Sunday 22 December - Nativity Service

Christmas Eve - 11:30pm service

There is also 'Lego church' for children and families on

Fridays 1 November and 22 November from 3 - 5pm.

We also hold a Discussion group from 3pm on a **Tuesday**.

For more information contact Rob Cross on [01663 750435](tel:01663750435) or email brierleygreenchurch@gmail.com.



Harvest Festival 2024

Chinley Independent Chapel

(on the Wash Road, SK23 0QN)

Weekly Sunday services take place at 10:30am with Communion on the **1st Sunday** of the month and all age worship on the **3rd Sunday** in the Sunday school rooms. Refreshments are served in the Sunday school after the service.

Messy Church (suitable for all ages) is held on the **1st Sunday** of the month at 4pm in the Sunday school hall with lots of fun, games, craft activities and sharing of food together. We finish off with a celebration and story time in a short act of worship, drawing together the threads of the theme discussed.

Upcoming services & events

A Remembrance Sunday Service will be held on **10 November** at 10:30am followed by the laying of wreaths at the Church cenotaph at 11:30am.

Please join us for our Christmas Fayre on **30 November** between 10:30am and 2pm for stalls, café and general conviviality.

Carols around the tree at the Sunday school is on **15 December** at 6:30pm.

Christmas Day service will be at 10am - all are welcome.

Full details of all church activities and groups may be found on the website

www.chinleyindependentchapel.org.uk/church-activities/services/.

PLEASE JOIN US WHEN YOU CAN!

Local Police

To contact the police:

- Ring 101 for non-emergencies and 999 for emergencies
- Visit www.crimestoppers-uk.org to make an anonymous report
- Visit www.derbyshire.police.uk

Message from PC Schofield: "I have recently joined the Safer Neighbourhood Team as the new neighbourhood constable for the Chinley, Buxworth, Chapel and Whaley Bridge area. Previously, I worked on the response side of policing in the High Peak. I am here to listen to the community and proactively tackle the issues you may have to help make Chinley and Buxworth a safer place. We're already looking into some of the issues raised, including parking and complaints with door-to-door sellers. Please feel free to come and have a chat if you see me out and about". PCSO Karen Green is working alongside PC Schofield for our area.

Samantha Wood Theatre Academy

We have places in some of our classes due to children progressing to the next level of their dance journey. Most places are in Pre School AcroDance (3-4yrs), Little Stars (2-4yrs parents come too!) and Grade 1 Modern. Visit our website to enrol for a free trial lesson in one or more of these, or other, classes: www.swtheatreacademy.co.uk.

Or phone Sue on **07785 787771** for more information.

1st Chinley Scouts

Chinley Scouts officially turns 100 years old in 2025 and we're planning to have a public celebration to mark the Centenary. There is some evidence that the group may have started in 1911, however it was not officially registered with the Scout Association until 1925 so that's the official date. If you have been involved with the group in the past and/or have any photographs or memories to share, we'd love to hear from you and see you in person at the celebration. Please contact gsl@chinleyscouts.org.uk if you have anything you'd like to share and we can make copies for display.

With the addition last year of the Squirrels section (for 4 to 6 year olds), the group now runs scouting activities for more than 100 Squirrels, Beavers, Cubs and Scouts each week. We also currently have 93 people on our waiting list. We'd love to offer more spaces but in order to do so, we need more adult volunteer help. If you would like to know more about how you could help, either behind the scenes or with face-to-face sessions, please email

gsl@chinleyscouts.org.uk. Scouting now operates a flexible volunteering philosophy so we can use whatever help you can give.

We've recently obtained planning permission for the construction of a new disabled access ramp and WC at the Scout hut and are in the process

of seeking grants and tenders for the works which we hope to carry out in 2025.

As usual, we will be attending the Remembrance parade this year and hope to have a good turnout. We'll be meeting on the access road to the Community Centre at 10:15am ready to parade to the cenotaph at the bottom of Stubbins Lane for the Act of Remembrance at 11am. Everyone is welcome to join us.

Association of Buxworth & Clayton (ABC)

On 18th September, the Bear Flag of California was raised on Squirrel Green in commemoration of the twinning of Buxworth with Clayton in California.

There is also another relevance to Buxworth and the Bear Flag, as one of their early residents Henry Marshall, fought under the Bear Flag when it was first raised on June 14th 1846 in California.

The flag was made of a piece of muslin with a red stripe sewn on the bottom, a painted grizzly and a star, together with the words, "California Republic."



County & Borough Councillors

The elected representatives for our parish are as follows:

Derbyshire County Council

Cllr Ruth George

High Peak Borough Council

Cllr Angela Benham & Cllr Dan Capper

Their contact details may be found on www.derbyshire.gov.uk and www.highpeak.gov.uk respectively.

Councillor Surgeries

Cllr Ruth George and Cllr Angela Benham hold joint surgeries to cover all council matters. Do come along to raise issues or have a chat:

- **1st Wednesday** of each month at Chinley Women's Institute Hall from 10:30 – 11:30am
- **3rd Wednesday** of each month at Bugsworth Memorial Club from 6:30 – 7:30pm

Message from Cllr Benham

What does a Borough Councillor do? Here's a taster of some of the activities a Borough Councillor can do to help out in the community:

- Walk around the locality with the local policing team to assess measures to relieve traffic congestion and unhelpful parking
- Contact the council on your behalf to report problems e.g. with street lighting, potholes, cracked and unsafe pavements
- Organise campaigns to stop dog fouling

- Take part in litter picking sessions
- Support and join in local community events
- Participate in discussions, meetings and action to do with e.g. climate change, local transport, housing, council finances and planning developments
- Make donations from their £1,000 Councillor Initiative Fund to worthy causes

If you are looking for a donation to help boost a worthwhile project within Blackbrook Ward, email me on angela.benham@highpeak.gov.uk.

A Borough Councillor's life is full of variety. There'll always be something I don't know the answer to but I will always endeavour to seek it out. If there's an issue you'd like to discuss with me, please get in touch. And if someone you know needs help, especially as the cold winter weather approaches, please let me know.

I see my role as supporting our different community groups and helping Blackbrook residents where I can.



Cllr Benham supporting the campaign on no dog fouling

What's On at the "Community Centre"

Whilst the Community Centre is demolished and rebuilt, many of the activities that used to take place in the old building have temporarily relocated to other local venues. Many of the Community Association's activities are now taking place at Chinley & Buxworth Women's Institute Hall (the WI Hall). Details may be found on our posters published monthly and posted around the village, on our website (see over) or on Facebook.

Book Swap Café & Library

The Community Cafe is going from strength to strength. Has word of our infamous bacon butties spread, or can the village smell the lovely aroma of real coffee etc every **Wednesday** morning from our temporary home in the WI Hall? Do join us from 10am until 12pm. Everyone is welcome.

One of our regulars, Sarah, has expertly crafted a felt creation of 2 bacon butties and this has been placed in the Time Capsule in the wall of the new Community Centre building.



Felt bacon butties before they were stored in the time capsule

The Parish Room is also open every **Wednesday** from 9:30 - 11:30am for Book Swap Library where you can drop, swap or borrow a choice of books and jigsaws. You will now be assured of a warm welcome from Mary Barnes, as Liz Stillo has now moved away from Chinley. The Community Association are very grateful to both Mary and Liz.

Citizen's Advice

We continue to offer a Citizen's Advice outreach session with free and confidential advice available at the WI Hall on the **1st Wednesday** of each month from 10 - 11:30am. The session will take place in the private, small meeting room at the WI Hall No appointment needed, just drop in.

For urgent advice, please contact the Advice Line on **0808 278 7954** (Mon-Fri 9am - 4pm).

Craft Club

Chinley Craft Club now meets at the Women's Institute Hall every **Tuesday** at the earlier time of 1 - 3pm. All are welcome to join our happy group of knitters, stitchers etc. Subs are £2 to include tea and biscuits. Free for your first time! Please phone/email Linda for more details on **01663 750448** or lpape999@gmail.com.



citizens
advice

“Friday” Friends

We are very grateful to the Women’s Institute for the opportunity to continue with meetings during the rebuild of the Community Centre, although our temporary new day (**Thursdays**) and time (1 - 3pm) have meant slightly reduced numbers attending.

We have a varied programme of activities such as bingo, films, quizzes and trips out. Information can be found on our website and on Facebook or on posters (in the WI notice board and the Parish Room window). We have had some lovely trips already this year to the Etihad Stadium, Chester Zoo, Southport Flower Show and others. The year will finish with our annual Christmas Lunch trips to Oswaldtwistle Mill. You would be very welcome to join us.



A recent “Friday Friends” trip to RHS Bridgewater

Musical Memories

Our singing group for all affected by dementia or poor mental health now takes place in the WI Hall on the **2nd and 4th Wednesdays** of each month from 1:15 - 2:30pm.



Musical Memories in the WI Hall

Chinley Baby & Toddler Group

Our baby and toddler group continues to meet whilst the new community centre is being rebuilt. We are now based upstairs at St Mary’s Church in Chinley in their new front lobby area and social space. It’s nice and cosy for everyone as the colder weather approaches. We are all really excited to get back to the new community centre next year! We meet every **Tuesday morning** in term-time from 10 - 11:30am. You can find us on Facebook - search for “Chinley baby and toddler group”. We hope to welcome you soon.

Contact Information

For more information on any of the Community Association activities, please contact Phil on the details overleaf or Linda on **01663 750448** or email **lpag999@gmail.com**.



community vision

Chinley, Buxworth and Brownside Community Association

Caretaker - Phil Manford - 01663 750100

bookings@chinleyca.org.uk

New Building - Getting Ready!

The Community Association are busy behind the scenes, getting ready to make sure everything is in place so that when the contractors hand over the new building to us, we can get everything ready to open up as soon as possible.

We are currently liaising with existing groups to support their return to the new building. We are also keen to bring in new groups and activities. To register your interest, please email Phil on the details above or email fundraiser@chinleyca.org.uk.

High Peak Lottery

High Peak Community Lottery is a weekly lottery that raises money for good causes in High Peak. Tickets for the lottery cost just £1 per week. A weekly draw takes place every Saturday night with a top prize of £25,000.

From every £1 ticket you buy, 50p goes to a local good cause of your choice and 10p goes to other good causes in High Peak.

Chinley, Buxworth & Brownside Community Association is registered as one of the good causes. If you

would like to support the Community Association raise money, please visit www.highpeakcommunitylottery.co.uk.

Click on Play and then search for the Community Association in the list of good causes. Thank You & Good Luck!

Christmas Fair

Because of the ongoing building works for the new community centre, we are sadly unable to offer our usual, and very popular, Summer Fair and Christmas Market this year.



We will, however, be holding a **CHRISTMAS FAIR** in the WI Hall on **Saturday 23 November** from 11am until 1pm!

It will be much smaller than usual, but we do hope you will still come along and support us to raise extra funds needed for our New Building Fund. Posters will be available very soon but in the meantime, we are asking for any kind contributions of raffle and tombola prizes, cakes and food products (jams?), any craft items and (alcoholic!) bottles for another stall. Thank you.

Visit www.chinleyca.org.uk for up-to-date information for
Chinley, Buxworth & Brownside Community Association